

Sample Program Overview of ELRC (times will vary)

Time	Main Doors	Changeroom 2& 3& 4	Ice	Changeroom 5&6	West Doors
9:45 – 10:00am	User A Enters	User A skates on			
10:00 – 10:15 am	CLEAN/SANITIZE		User A on ice (through West ice door access)		
10:15 – 10:30 am					
10:30 – 10:45 am					
10:45 – 11:00 am		User A skates off	Ice Resurfacer		User A Exits
11:00 – 11:15am		CLEAN/SANITIZE			CLEAN/SANITIZE
11:15 – 11:30am	User B Enters	CLEAN/SANITIZE		User B skates on	
11:30 – 11:45am	CLEAN/SANITIZE		User B on ice (through West ice door access)		
11:45 – 12:00pm					
12:00 – 12:15pm					
12:15 – 12:30pm			Ice Resurfacer	User B skates off	User B Exits
12:30 – 12:45 pm				CLEAN/SANITIZE	CLEAN/SANITIZE
12:45 – 1:00pm	User C Enters	User C skates on		CLEAN/SANITIZE	
1:00 – 1:15 pm	CLEAN/SANITIZE		User C on ice (through West ice door access)		
1:15 – 1:30pm					
1:30 – 1:45pm					
1:45 – 2:00 pm		User C Skates Off	Ice Resurfacer		User C Exits
2:00 – 2:15 pm		CLEAN/SANITIZE			CLEAN/SANITIZE
2:15 – 2:30 pm		CLEAN/SANITIZE			

Wallace Community Centre

Entering the Facility at WCC for ice rental – South Entrance

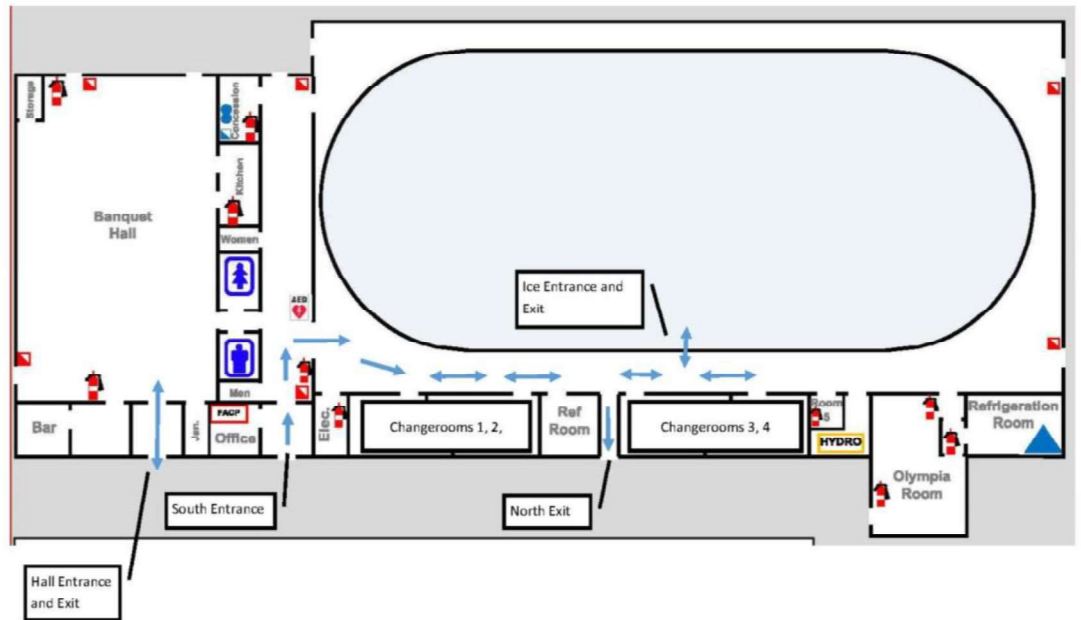
Action 3.1: All participants are encouraged to arrive at the facility dressed. Participants are to enter through the South Doors and go directly to their assigned dressing room. Dressing rooms are only available for putting skates on/off. To allow for physical distancing, dressing rooms will only accommodate a maximum of 8 participants. Two dressing rooms will be available per hour. No spectators will be permitted.

Action 3.2: The number of ice participants and practices identified in Action 3.1 will remain. Each participant will be allowed 1 spectator. Spectators will enter through South Doors and sit in designated areas, maintaining physical distance from others. Spectators will exit through North Doors.

Action 3.3 The number of ice participants and practices identified in Action 3.1 will remain. Hall rentals will have separate entrance/exits from ice rentals. Some areas will be out of bounds in order to separate the groups. Each ice participant will be allowed 1 spectator, which will have assigned entrance/exit and seating sections. Additional spectators will be only permitted within gathering limits.

Exiting the WCC Facility from Ice Rental – North Exit

Ice participants and spectators who are within the facility must exit through the North Doors. This is to avoid cross over of other users entering through South Doors for their ice time.



Sample Program Overview of WCC (times will vary)

Time	South Doors	Changeroom 3&4	Ice	Changeroom 5&6	North Doors
9:45 – 10:00am	User A Enters	User A skates on			
10:00 – 10:15 am	CLEAN/SANITIZE		User A on ice		
10:15 – 10:30 am			(through West ice door access)		
10:30 – 10:45 am					
10:45 – 11:00 am		User A skates off	Ice Resurfacer		User A Exits
11:00 – 11:15am		CLEAN/SANITIZE			CLEAN/SANITIZE
11:15 – 11:30am	User B Enters	CLEAN/SANITIZE		User B skates on	
11:30 – 11:45am	CLEAN/SANITIZE		User B on ice		
11:45 – 12:00pm			(through West ice door access)		
12:00 – 12:15pm					
12:15 – 12:30pm			Ice Resurfacer	User B skates off	User B Exits
12:30 – 12:45 pm				CLEAN/SANITIZE	CLEAN/SANITIZE
12:45 – 1:00pm	User C Enters	User C skates on		CLEAN/SANITIZE	
1:00 – 1:15 pm	CLEAN/SANITIZE		User C on ice		
1:15 – 1:30pm			(through West ice door access)		
1:30 – 1:45pm					
1:45 – 2:00 pm		User C Skates Off	Ice Resurfacer		User C Exits
2:00 – 2:15 pm		CLEAN/SANITIZE			CLEAN/SANITIZE
2:15 – 2:30 pm		CLEAN/SANITIZE			